



## Luminaire

# Mila-S

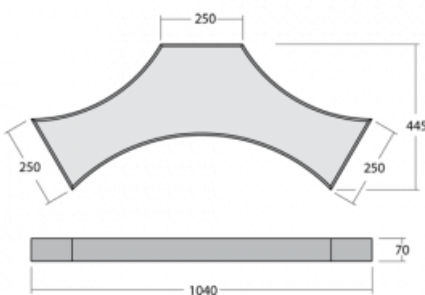
101S-200K-10GHQ/TC, S



One model, thousands of combinations. The Mila-S luminaire, designed by the world's leading designer Rob Van Beek, is innovative in every aspect. Thanks to a unique magnetic system, you can connect the luminaires to create spatial structures of various shapes without the need for tools. However, none of this would be possible without the latest LED technology, which is hidden inside the aluminium profiles in white, black or silver. In addition, the hidden light source does not create any undesirable shadows. Thanks to the possibility of dimming, the luminaire is suitable for showrooms, offices and various representative spaces. Even the name of this lighting system is perfectly thought through – Mila means “a thousand” in Italian.

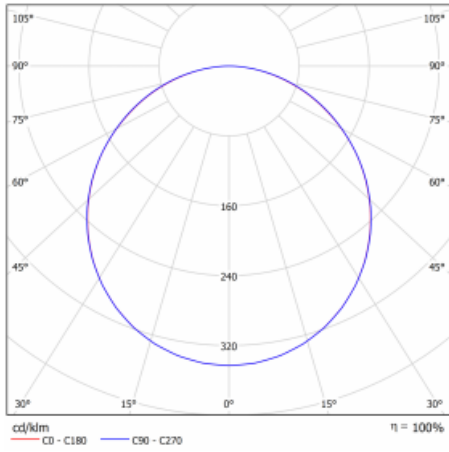
Design Rob van Beek

## Technical drawing



Type of installation	Surface, Wall mounted, Suspended
Light distribution	Direct
Luminaire shape	Other shape
Colour of the luminaires	Silver
Material	Aluminium
Lifetime	L80/B20 50 000 hours
Warranty	5 years
Description of luminaires	Luminaire surface/wall mounted/suspended
item description	Tunable-White HO
Dimensions (l × w × h mm)	1040 mm × 445 mm × 70 mm
Light source	LED MODUL
DIR optical system	Opal diffuser
Luminous flux*	4290 lm
Colour Temperature	2700 K - 6500 K Tunable White
Luminous efficacy	67 lm/W
MacAdam Light source	3
Colour rendering index	90
UGR max. X=4H Y=8H, $\rho=70,50,20$	21

## Curve



Luminaire power input\* 64.4 W

Connection of the luminaires DALI DT8

Electrical voltage 220-240V

Frequency 50/60Hz

⊕ CE IP 20

\*±10 %

## Downloads

Installation instructions



Photos



**Accessories**


**00-00300, N**  
wire suspension  
2000mm



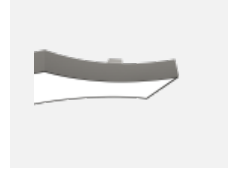
**00-00301, N**  
wire suspension  
4000mm



**00-00302, N**  
wire suspension  
6000mm



**00-00370, S**  
ceiling cup 80x80x32mm



**101-0001, S**  
accessory for creating of  
distance between  
mounting surface



**101-0012, K**  
cable 5x0,75mm with  
WAGO connector,  
transparent



**101-0014, S**  
cable 5x 0,75 mm, 2m  
with WAGO connector,  
transparent



**101-0016, S**  
cable 5x 0,75 mm, 6m  
with WAGO connector,  
transparent