



## Luminaire

# Mila-S

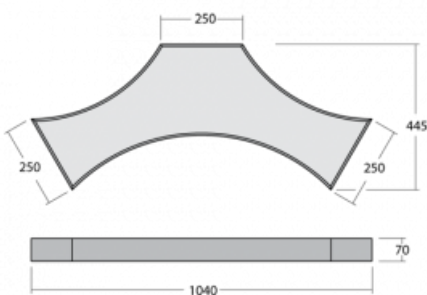
101S-200K-10GGD/830, B



One model, thousands of combinations. The Mila-S luminaire, designed by the world's leading designer Rob Van Beek, is innovative in every aspect. Thanks to a unique magnetic system, you can connect the luminaires to create spatial structures of various shapes without the need for tools. However, none of this would be possible without the latest LED technology, which is hidden inside the aluminium profiles in white, black or silver. In addition, the hidden light source does not create any undesirable shadows. Thanks to the possibility of dimming, the luminaire is suitable for showrooms, offices and various representative spaces. Even the name of this lighting system is perfectly thought through – Mila means “a thousand” in Italian.

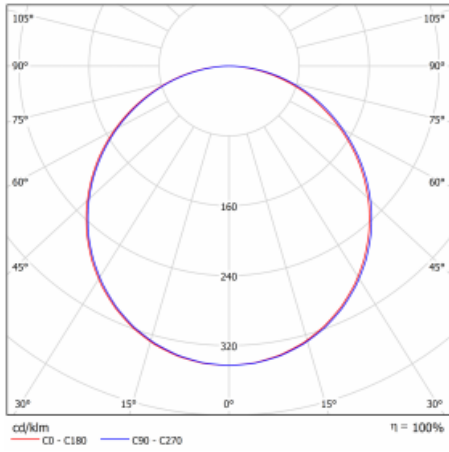
Design Rob van Beek

## Technical drawing



|  |  |
|--|--|
| Type of installation                   | Surface, Wall mounted, Suspended         |
| Light distribution                     | Direct                                   |
| Luminaire shape                        | Other shape                              |
| Colour of the luminaires               | Black                                    |
| Material                               | Aluminium                                |
| Lifetime                               | L80/B20 50 000 hours                     |
| Warranty                               | 5 years                                  |
| Description of luminaires              | Luminaire surface/wall mounted/suspended |
| Dimensions (l × w × h mm)              | 1040 mm × 445 mm × 70 mm                 |
| Weight                                 | 8.7 kg                                   |
| Light source                           | LED MODUL                                |
| DIR optical system                     | Opal diffuser                            |
| Luminous flux*                         | 3220 lm                                  |
| Colour Temperature                     | 3000 K warm white                        |
| Luminous efficacy                      | 99 lm/W                                  |
| MacAdam Light source                   | 3  |
| Colour rendering index                 | 80                                       |
| UGR max. X=4H<br>Y=8H, $\rho=70,50,20$ | 20                                       |

## Curve



Luminaire power input\* 32.4 W

Connection of the luminaires DALI

Electrical voltage 220-240V

Frequency 50/60Hz

⊕ CE IP 20

\*±10 %

## Downloads

Installation instructions



Photos



**Accessories**

**00-00300, N**  
wire suspension  
2000mm



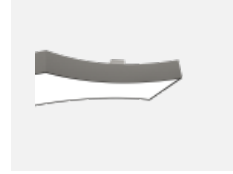
**00-00301, N**  
wire suspension  
4000mm



**00-00302, N**  
wire suspension  
6000mm



**00-00370, B**  
ceiling cup 80x80x32mm



**101-0001, B**  
accessory for creating of  
distance between  
mounting surface



**101-0014, B**  
cable 5x 0,75 mm, 2m  
with WAGO connector,  
black



**101-0016, B**  
cable 5x 0,75 mm, 6m  
with WAGO connector,  
black